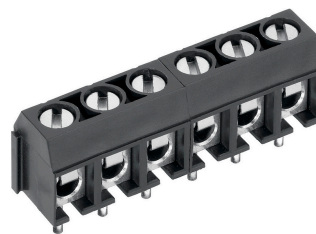






# AK500/..DS-5.0-V-GREY



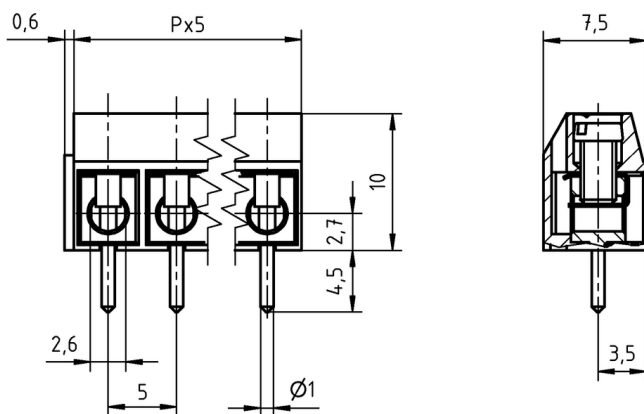
## Technical Data

Wire Sizes		Insulating Material	
Solid min	0.2 mm <sup>2</sup>	Material	PA 6.6
solid max	1.5 mm <sup>2</sup>	Flammability Class	UL 94 V-0
Stranded (flexible) min	0.2 mm <sup>2</sup>	<b>Temperatures</b>	
Stranded (flexible) max	1.5 mm <sup>2</sup>	Operating Temperature	-30 °C - 105 °C
Stranded with Ferrule min	0.2 mm <sup>2</sup>	<b>Wave Soldering Process</b>	
Stranded with Ferrule max	1.5 mm <sup>2</sup>	Soldering Temperature, recommended	265 °C
<b>Dimensions</b>		Peak Soldering Time, recommended	3-4 s
Stripped Length	6.0 mm	<b>Reflow Process</b>	
PCB Hole Diameter	1.3 mm	Soldering Temperature, recommended	-
<b>Materials</b>		Peak Soldering Time, recommended	-
Clamp	Brass		
Wire Guard	Stainless Steel		
Screw	Steel		

## Colours

GREY	RAL7016	
BLACK	RAL9011	
GREEN	RAL6018	
BLUE	RAL5015	




Colours according to RAL, there may be variations on colour due to production conditions. Special colours on request.



## Order Data (Spacing 5.0 mm)

Poles	Width (mm)	Article Designation	Article Number	PU
2	10.60	AK500/2DS-5.0-V-GREY	50500020121G	250
3	15.60	AK500/3DS-5.0-V-GREY	50500030121G	250
4	20.60	AK500/4DS-5.0-V-GREY	50500040121G	250
5	25.60	AK500/5DS-5.0-V-GREY	50500050121G	250
6	30.60	AK500/6DS-5.0-V-GREY	50500060121G	250
7	35.60	AK500/7DS-5.0-V-GREY	50500070121G	250
8	40.60	AK500/8DS-5.0-V-GREY	50500080121E	100
9	45.60	AK500/9DS-5.0-V-GREY	50500090121E	100
10	50.60	AK500/10DS-5.0-V-GREY	50500100121E	100
11	55.60	AK500/11DS-5.0-V-GREY	50500110121E	100
12	60.60	AK500/12DS-5.0-V-GREY	50500120121E	100

## Accessories

Figure	Designation	Article Number
	Bridge, 2-pole, insulated, BRI/2-5.0/5.08-LIGHT GREY	50000000006
	Bridge, 3-pole, insulated, BRI/3-5.0/5.08-LIGHT GREY	50000000007
	Bridge, 2-pole, BR/2-5.0/5.08-L7.0	50000000008

## Ratings



Usegroup	B	C	D		
Rated Voltage	300 V	-	300 V	250 V	
Rated Current	15 A	-	10 A	17.5 A	
Rated Wire Size			min		max
	solid	AWG 22-14	-	AWG 22-14	0.5 mm <sup>2</sup>
	stranded	AWG 22-14	-	AWG 22-14	0.5 mm <sup>2</sup>
Torque	0.40 Nm		0.40 Nm		0.40 Nm
Screw Size	M2.6		M2.6		M2.6
Test Voltage	1.6 kV		1.6 kV		2.0 kV